

Project: **NCCW - York Parenting Facility**

**4495**

Proj. No.

Date: 4/16/2019  
To: Bidders of Record  
From: Dan Mulligan  
RE: Clarifications & Additions/Architectural

---

**note**

*This addendum is hereby made a part of the contract documents to the same extent as though it were originally included therein. Contract documents shall be considered modified or revised as hereinafter described.*

**general conditions**

1. Permits and Plans Review
  - A. Building permit will not be required.
  - B. NDCS will be responsible for submitting plans to fire marshal.
2. Liquidated Damages, Clarification
  - A. Refer to "Instructions To Bidders," paragraph 1. Bid Security.
3. Site Photographs
  - A. On-site photos of existing conditions including nearby brick samples are available upon request. Please contact Nathan Bornemeier at [Nathan.Bornemeier@nebraska.gov](mailto:Nathan.Bornemeier@nebraska.gov)

**architectural items**

1. Sheet GN1.5 added to set
  - A. Site enclosure fence extents indicated.
  - B. Temporary access road location and surfacing material indicated.
2. Sheet A220
  - A. Clarification bituminous damp-proofing, Details A1 & A5: extents of damp-proofing to be over top of grade beam and 6" down face (specifications are correct).

## addendum

---

---

**addendum no.** 01

**date:** 4/16/2019

**project name:** NCCW Parenting Facility

**project no:** 17431

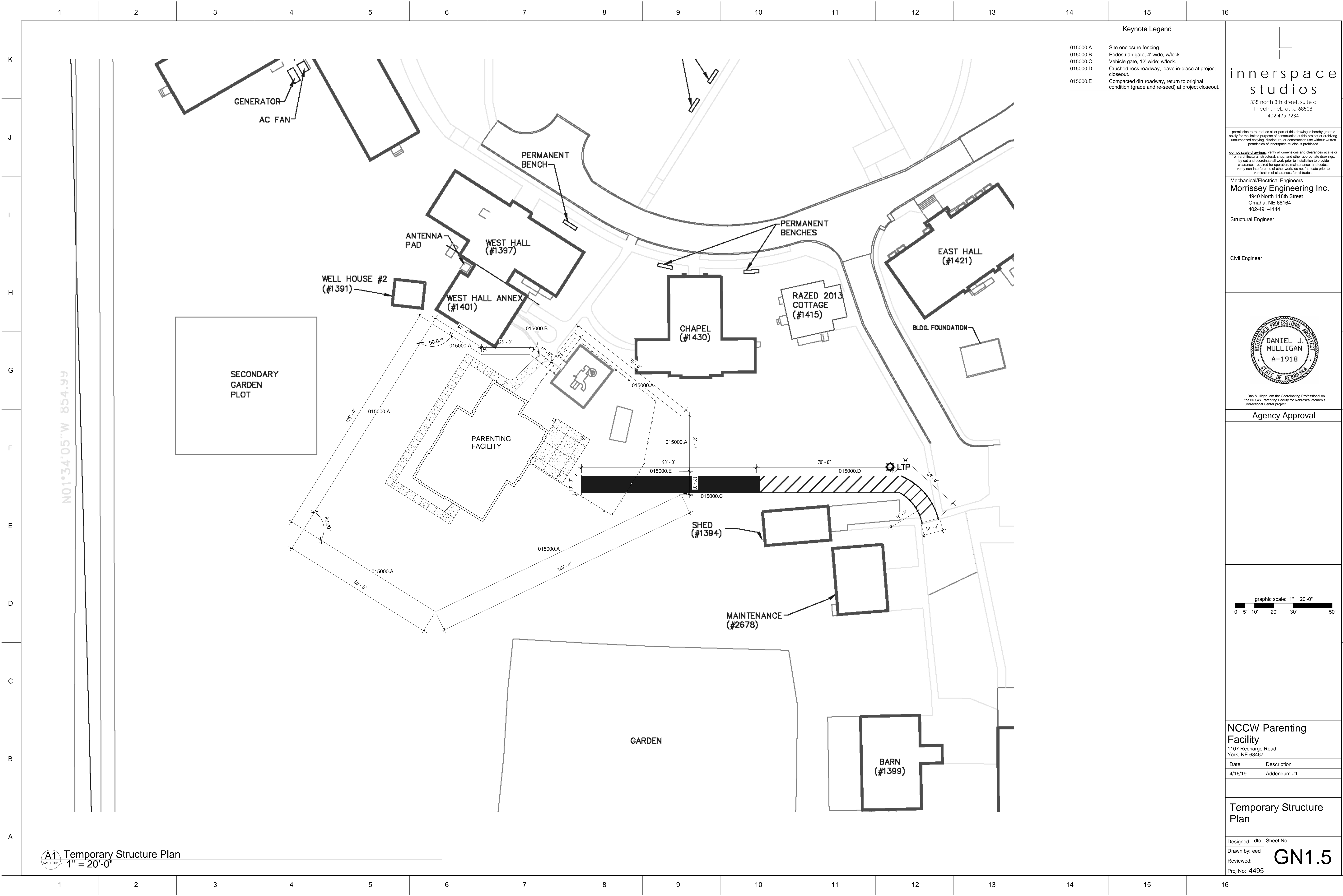
---

This addendum is hereby made a part of the contract documents to the same extent as if it were originally included therein. Contract documents shall be considered modified or revised as hereinafter described.

### ***electrical items***

1. Sheet E001 – SITE PLAN – ELECTRICAL
  - a. Revise Keynote 1.
  - b. Revise electrical service entrance configuration and conduit routing.
  - c. Remove Transformer Pad Detail.
  - d. Site Lighting Schedule – Subject to compliance with the requirements, the follow manufacturers shall be considered equal to the specified manufacturer
    - i. Fixture A: McGraw Edison
  
2. Sheet E401 – ELECTRICAL SCHEDULES
  - a. Modify Electrical Riser Diagram
  - b. Luminaire Schedule – Subject to compliance with the requirements, the follow manufacturers shall be considered equal to the specified manufacturer
    - i. Fixture 1 and 1F – Aurora
    - ii. Fixture 2 – Paco
    - iii. Fixture 3 – Advantage Environmental Lighting
    - iv. Fixture 4 – ATG Electronics
    - v. Fixture X1 and X2 - Emergensee

***end of addendum***



**Keynote Legend**

015000.A	Site enclosure fencing.
015000.B	Pedestrian gate, 4' wide; w/lock.
015000.C	Vehicle gate, 12' wide; w/lock.
015000.D	Crushed rock roadway, leave in-place at project closeout.
015000.E	Compacted dirt roadway, return to original condition (grade and re-seed) at project closeout.

**innerspace studios**  
 335 north 8th street, suite c  
 lincoln, nebraska 68508  
 402.475.7234

permission to reproduce all or part of this drawing is hereby granted solely for the limited purpose of construction of this project or archiving unaltered copying, disclosure, or construction use without written permission of innerspace studios is prohibited.

**do not scale drawings:** verify all dimensions and clearances at site or from architectural, structural, shop, and other appropriate drawings. lay out and coordinate all work prior to installation to provide clearances required for operation, maintenance, and code. verify non-interference of other work. do not fabricate prior to verification of clearances for all trades.

Mechanical/Electrical Engineers  
**Morrissey Engineering Inc.**  
 4940 North 118th Street  
 Omaha, NE 68164  
 402-491-4144

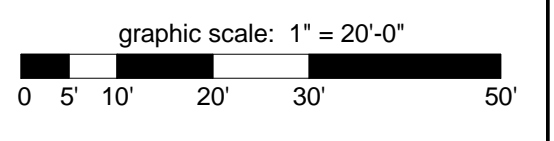
Structural Engineer

Civil Engineer



I, Dan Mulligan, am the Coordinating Professional on the NCCW Parenting Facility for Nebraska Women's Correctional Center project.

**Agency Approval**



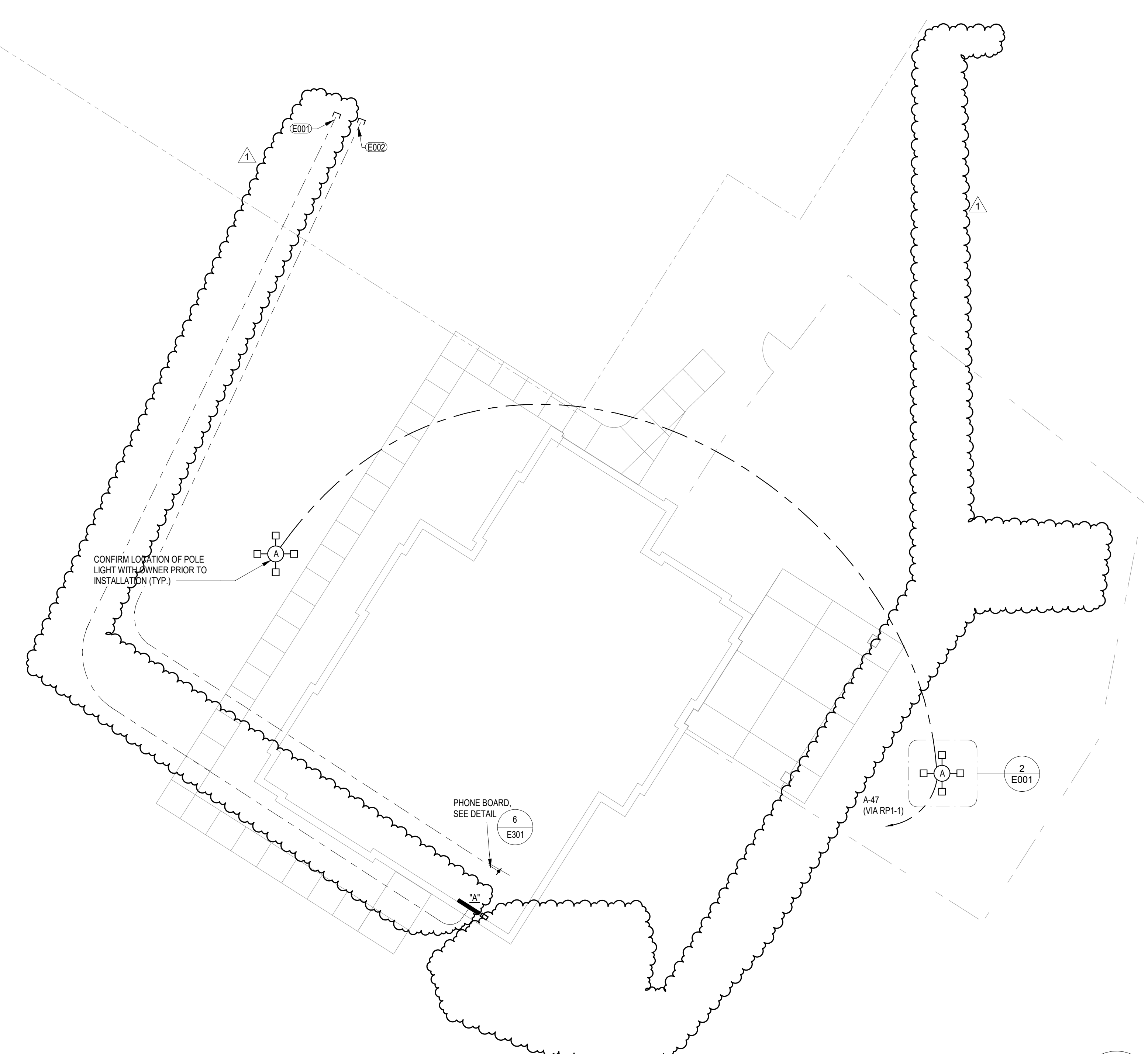
**NCCW Parenting Facility**  
 1107 Recharge Road  
 York, NE 68467

Date	Description
4/16/19	Addendum #1

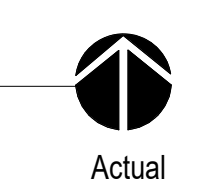
**Temporary Structure Plan**

Designed: dfo	Sheet No
Drawn by: eed	<b>GN1.5</b>
Reviewed:	
Proj No: 4495	

**A1 Temporary Structure Plan**  
 1" = 20'-0"

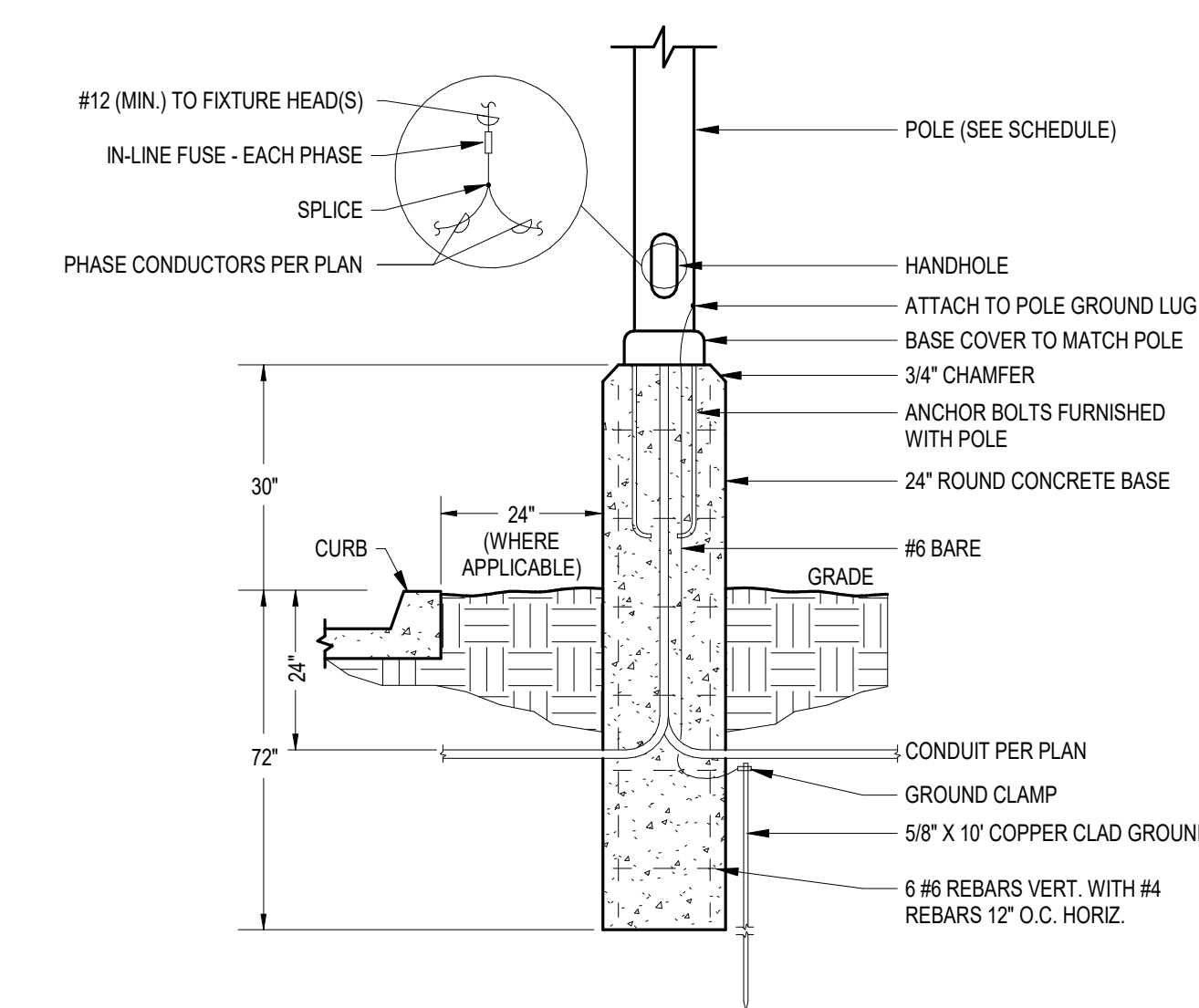


1 Site Plan - Electrical  
1" = 10'-0"



SITE LIGHTING SCHEDULE												
MARK	DESCRIPTION	MANUFACTURER	CATALOG NUMBER (NOTE A)	BEAM DIST.	LAMP DATA			QTY. PER POLE	POLE DESCRIPTION			REMARKS
					SIZE	TYPE	VOLTS		TYPE (NOTE B)	FINISH	HT. (FT.)	
A	POLE LIGHT	LITHONIA	DSX1 LED P5 50K TFM MVOLT SPA DDBXD	FT	15,000 LM	LED	120 V	4	SSS	DDBXD	30 FT	NOTE C

**NOTES:**  
 A. CONTRACTOR SHALL VERIFY CATALOG NUMBERS AND INSTALLATION REQUIREMENTS PRIOR TO ORDERING. NOTIFY ENGINEER OF ANY CONFLICTS WITH PROPOSED INSTALLATION.  
 B. POLE TYPE DESCRIPTION: SSS = SQUARE STRAIGHT STEEL, STS = SQUARE TAPERED STEEL, RSS = ROUND STRAIGHT STEEL, RTS = ROUND TAPERED STEEL, SSA = SQUARE STRAIGHT ALUMINUM, STS = SQUARE TAPERED STEEL, RSA = ROUND STRAIGHT ALUMINUM, RTA = ROUND TAPERED ALUMINUM  
 C. PROVIDE WITH FACTORY INSTALLED VIBRATION DAMPENER.



2 POLE BASE DETAIL

- GENERAL NOTES**
- A. PROVIDE ALL REQUIRED EXCAVATION, TRENCHING, BORING, SHORING, BACKFILL AND SURFACE REPAIR REQUIRED FOR INSTALLATION OF UTILITIES.
  - B. CALL BEFORE YOU DIG. CALL DIGGERS HOTLINE OF NEBRASKA: STATEWIDE (800) 331-5666
  - C. UTILITY LOCATIONS INDICATED ON DRAWINGS ARE APPROXIMATE AND THE MOST ACCURATE INFORMATION AVAILABLE AT THE TIME OF DESIGN. PRIOR TO EQUIPMENT AND CONDUIT INSTALLATION, COORDINATE EXACT INSTALLATION DETAILS AND MODIFY WORK PLAN ACCORDINGLY TO MEET UTILITY REQUIREMENTS. CORRESPOND WITH UTILITY COMPANY, OR OWNER FOR PRIVATE UTILITIES, PRIOR TO ANY SITE DEVELOPMENT THAT MAY IMPACT THE INSTALLATION SUCH AS IRRIGATION INSTALLATION, CONCRETE OR ASPHALT INSTALLATION, LANDSCAPING, ETC.
  - D. PROVIDE A GREEN INSULATED GROUND WIRE IN ALL LIGHTING BRANCH CIRCUITS.
  - E. MINIMUM SIZE OF ALL UNDERGROUND CONDUIT SHALL BE 1". MINIMUM WIRE SIZE SHALL BE #10 AWG, #10 AWG GROUND.
  - F. WHERE POSSIBLE, ROUTE CONDUITS UNDER HARD SURFACE TO AVOID CONFLICTS WITH LANDSCAPING AND LAWN IRRIGATION.
  - G. REFER TO CIVIL DRAWINGS FOR EXISTING AND NEW UTILITY LOCATIONS.

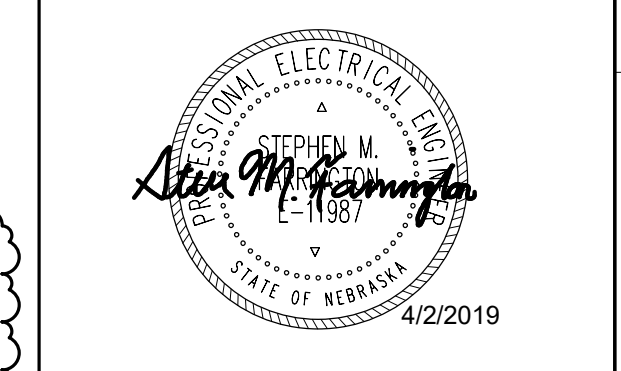
- KEYNOTES**
- E001 STUB ELECTRICAL CONDUIT INTO ADJACENT BUILDING FOR POWER SERVICE. SEE POWER RISER DIAGRAM ON SHEET E401 FOR MORE INFORMATION. COORDINATE CONDUIT ROUTING WITH LOCATION WITH OWNER PRIOR TO ROUGH-IN.
  - E002 2-2" U.G. TELECOM CONDUITS FOR INCOMING TELECOMMUNICATIONS SERVICE. STUB CONDUITS INTO MAIN DISTRIBUTION PANEL IN ADJACENT BUILDING. COORDINATE LOCATION WITH OWNER PRIOR TO ROUGH-IN.

**innerspace studios**  
 335 north 8th street, suite c  
 lincoln, nebraska 68508  
 402.475.7234

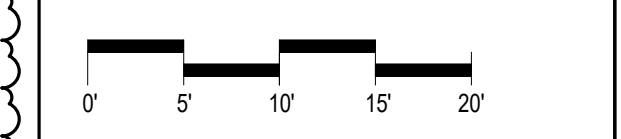
permission to reproduce all or part of this drawing is hereby granted solely for the limited purpose of construction of this project or archiving. unauthorized copying, disclosure, or construction use without written permission of innerspace studios is prohibited.

**Morrissey Engineering Inc.**  
 Mechanical/Electrical Engineers  
 4940 North 118th Street  
 Omaha, NE 68164  
 402-491-4144

Structural Engineer  
 Civil Engineer



Agency Approval



**NCCW Parenting Facility**  
 Nebraska Correctional Center for Women  
 1107 Recharge Road  
 York, NE 68467

Date	Description
4/2/19	Construction Documents

Site Plan - Electrical

MEI PROJECT NO: 17431

**morrissey engineering inc**  
 mechanical | electrical | lighting | technology | commissioning  
 4940 North 118th Street  
 Omaha, NE 68164  
 P: 402.491.4144  
 www.morrisseyengineering.com

© copyright  
 permission to reproduce all or part of this drawing is hereby granted solely for the limited purpose of construction of this project or archiving. unauthorized copying, disclosure, or construction use without written permission of morrissey engineering, inc. is prohibited by copyright law.  
 note:  
 do not scale drawings. verify all dimensions and clearances from architectural, structural, shop and other appropriate drawings or at site. lay out and coordinate all work prior to installation to provide clearances required for operation, maintenance, and codes and verify non-interference with other work. do not fabricate prior to verification of clearance for all trades.

Designed: smf  
 Drawn by: kso  
 Reviewed: smf  
 Proj No: 4495

Sheet No  
**E001**

